

## Ultra low emission burner



Crafted to Amaze

# sirocco

## Catalytic wood fire



clean air  
approved



economical



leading  
design

Blaze King has been making Catalytic wood fires for 30 years. Our wood fires have a reputation for craftsmanship and performance. Designed for the home where reliability, efficiency and performance is demanded to provide you with controlled heat all night long. An Ultra Low Emission Burner permits the fire to be installed into any home.

- 69% Efficient
- 9.2kW maximum heat output (as tested)
- Overnight burn
- Built in thermostat - no electricity required
- Traditional wood fire design
- Extra large firebox, with large viewing window and cast iron door
- Ash only floor protector required

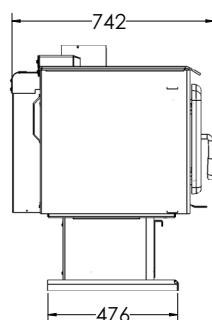
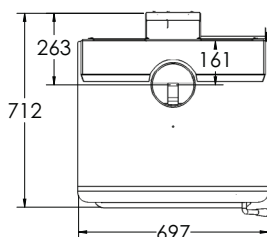
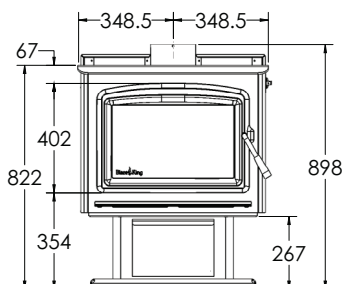


Sirocco Legs

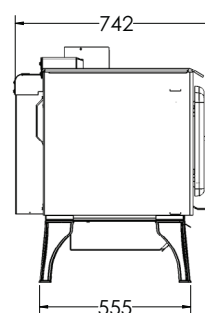
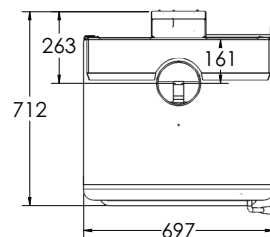
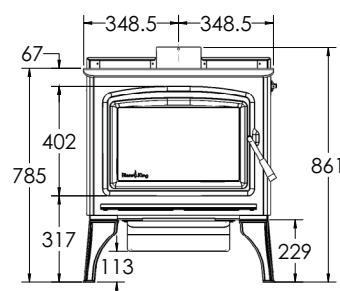


Sirocco Pedestal

#### Dimension Pedestal



#### Dimension Legs



## Features & Benefits

- Size Matters**  
 A firebox big enough to hold enough wood for your busy lifestyle and allow you to get a full night's sleep without having to re-load.
- Clean Burning**  
 Amongst the cleanest and most efficient wood fires available. Reducing emissions and lessening your impact on the environment.
- Catalytic Combustion Technology**  
 A Blaze King fire was certified as the first ever clean burning wood fire in North America. A refined version of this technology is what you see in every Blaze King today.
- Thermostat Control**  
 No electricity required. The built in thermostat constantly monitors the heat output of your fire and adjusts the air required for combustion.
- Easy to Operate**  
 Light the fire in the autumn and turn it off in the spring. It is like a slow cooker. No need to continuously feed the fire, you just load it and leave it.
- Lower Heating Costs**  
 The efficiency of the exclusive thermostat and catalytic combustor technology allows you to burn up to 33% less wood.
- Less Cleaning**  
 Produces very fine ash because every last drop of energy is extracted from the wood, allowing you to go for long periods without having to empty your fire.
- Door Design**  
 A steel frame around the door opening adds strength to the firebox and creates a tight seal.

#### Minimum Clearances

Parallel Position Clearance Distance	Position	Clearance (mm)
	(A) Rear	320
	(B) Side	320
	(C) Floor protector (front)	300
	(D) Floor protector (side)	200
	(E) Flue (rear)	480
Corner Position Clearance Distance	Position	Clearance (mm)
	(F) Side	200
	(G) Side	200
	(H) Floor protector (front)	300
	(I) Floor protector (side)	200
	(J) Flue (rear)	560
	(K) Flue (corner)	792